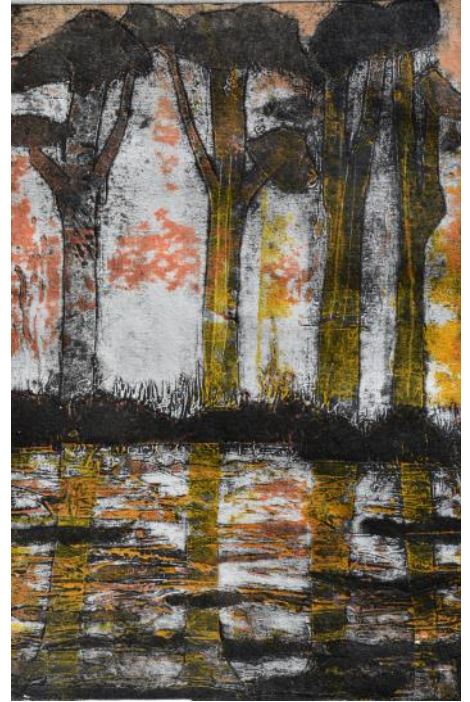




Anthroposophical Society In Australia
NEW SOUTH WALES BRANCH

Etheric Geography Conference *Part 2*



at Linuwel School, East Maitland, NSW
on September 17 to 19, 2021

Etheric Geography — The Effect of Thinking on the Health of Ecosystems

What is our connection to the sacred, and how does our consciousness affect another? There has always been a connection to the subtle realms — the etheric — of environment, ecosystem, and Other.

We connect to these worlds through the rhythms we create in life, the sacred spiritual cycle of the year expressed in manifold festivals of the year.

Through rhythm, ritual, festivals and depth of community we can learn how our thinking, feeling and doing affect the health of all levels of environment.

This year our second Etheric Geography Conference will focus on the interconnection between the effects of environment, landscape and sacred eco-systems upon our selves and the living consciousness of the human being and their communities upon the earth.

In our times the ability to think has devolved and through inner awareness we can learn the healing power of thought.

Presenters include Martin Samson, author of *Festivals in the Southern Hemisphere*, and anthroposophic naturopath Irmhild Kleinhenz.

More information will be sent out soon.

Martin Samson will hold a pre-conference sacred nature practices day in the Newcastle/ Maitland area, as discussed at the 2020 conference.

It is planned for Saturday, August 14, from 10am to 3pm.

This will also be followed by a stars exploration workshop and star-gazing into the evening. The two events can be attended singly or together.

Financial contribution by donation. Contact Martin to register for this August pre-conference event, msamson@email.org.au